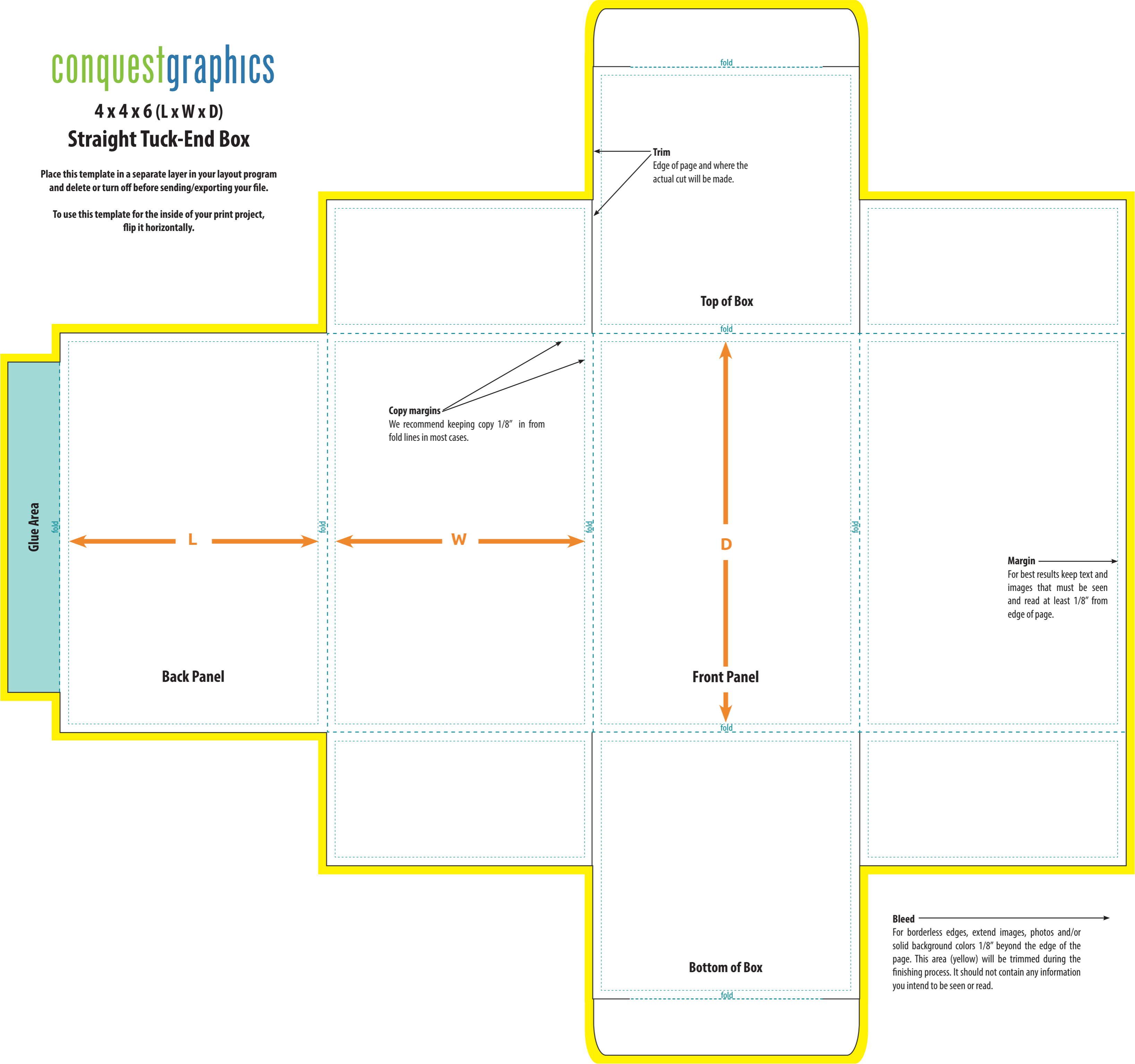


4 x 4 x 6 (L x W x D)

Straight Tuck-End Box

Place this template in a separate layer in your layout program and delete or turn off before sending/exporting your file.

To use this template for the inside of your print project, flip it horizontally.



fold

Trim
Edge of page and where the actual cut will be made.

Top of Box

fold

Copy margins
We recommend keeping copy 1/8" in from fold lines in most cases.

Glue Area

fold

L

fold

W

fold

D

fold

Back Panel

Front Panel

fold

Margin
For best results keep text and images that must be seen and read at least 1/8" from edge of page.

Bottom of Box

fold

Bleed
For borderless edges, extend images, photos and/or solid background colors 1/8" beyond the edge of the page. This area (yellow) will be trimmed during the finishing process. It should not contain any information you intend to be seen or read.