

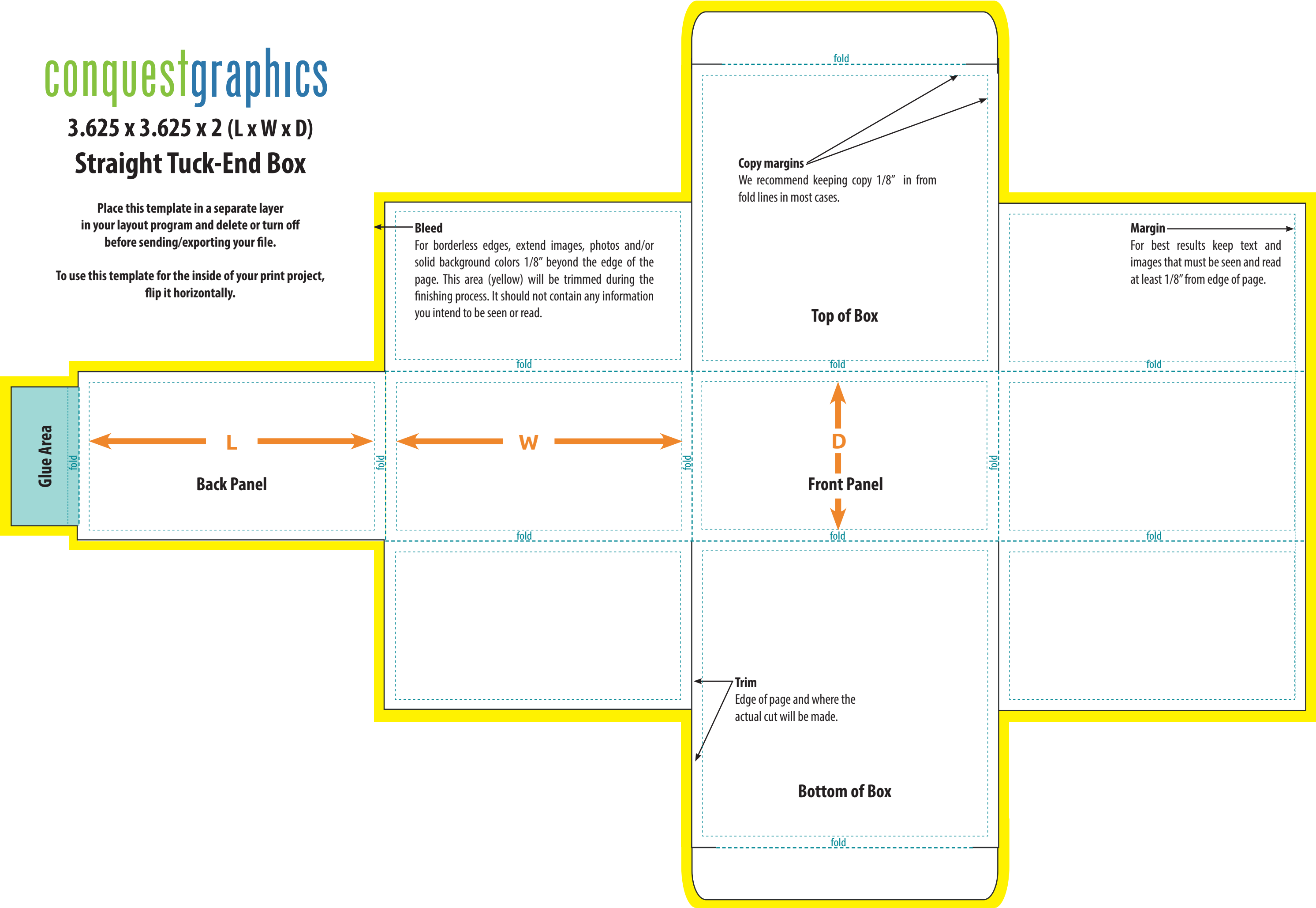
conquestgraphics

3.625 x 3.625 x 2 (L x W x D)

Straight Tuck-End Box

Place this template in a separate layer in your layout program and delete or turn off before sending/exporting your file.

To use this template for the inside of your print project, flip it horizontally.



Glue Area

Back Panel

L

W

Front Panel

D

Bottom of Box

Top of Box

Bleed

For borderless edges, extend images, photos and/or solid background colors 1/8" beyond the edge of the page. This area (yellow) will be trimmed during the finishing process. It should not contain any information you intend to be seen or read.

Copy margins

We recommend keeping copy 1/8" in from fold lines in most cases.

Margin

For best results keep text and images that must be seen and read at least 1/8" from edge of page.

Trim

Edge of page and where the actual cut will be made.

fold

fold

fold

fold

fold

fold

fold

fold

fold

fold

fold

fold