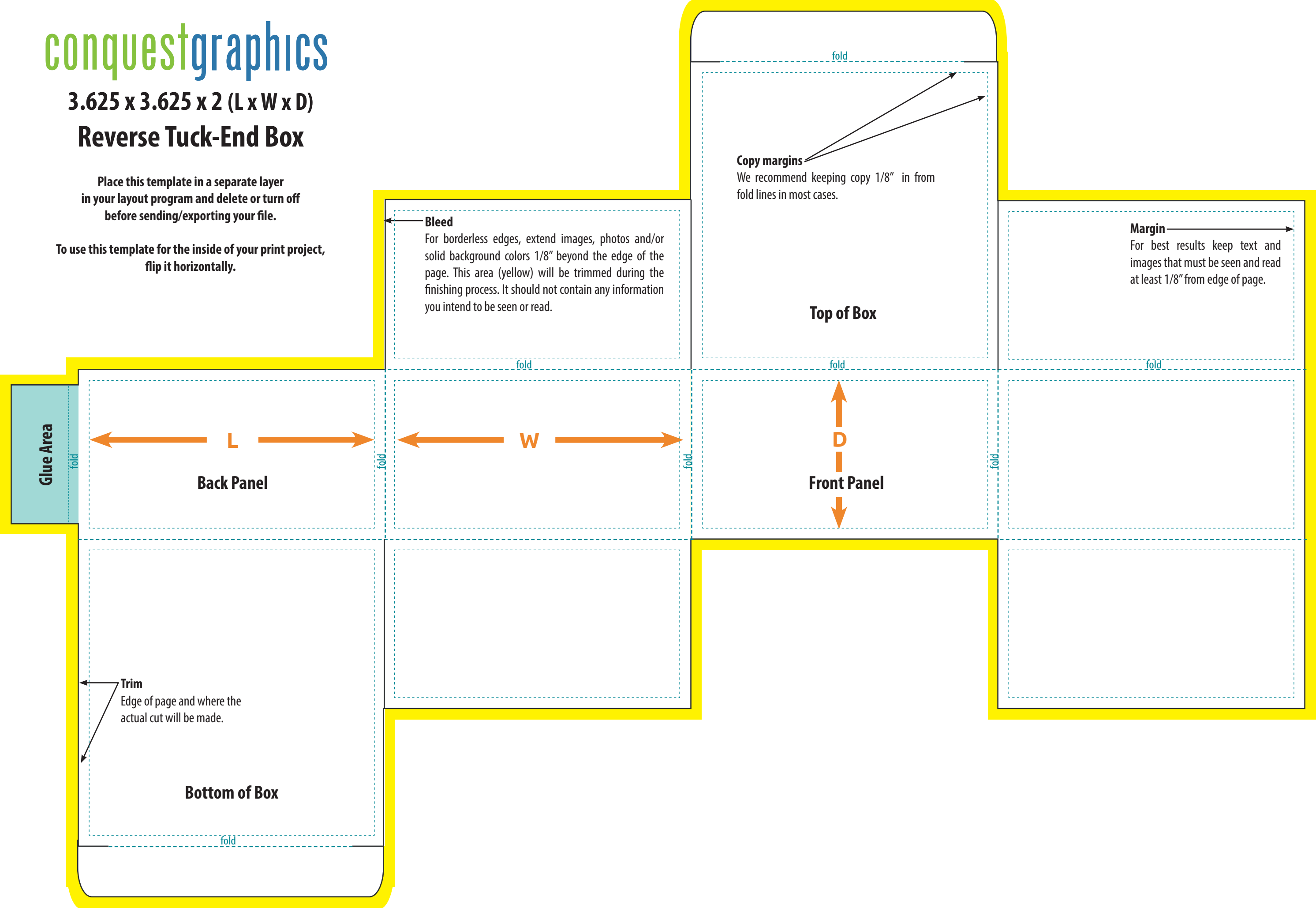


3.625 x 3.625 x 2 (L x W x D)

Reverse Tuck-End Box

Place this template in a separate layer in your layout program and delete or turn off before sending/exporting your file.

To use this template for the inside of your print project, flip it horizontally.



Glue Area

fold

Back Panel

L

fold

fold

W

fold

Front Panel

D

fold

fold

fold

Copy margins

We recommend keeping copy 1/8" in from fold lines in most cases.

Bleed

For borderless edges, extend images, photos and/or solid background colors 1/8" beyond the edge of the page. This area (yellow) will be trimmed during the finishing process. It should not contain any information you intend to be seen or read.

Margin

For best results keep text and images that must be seen and read at least 1/8" from edge of page.

Top of Box

Trim

Edge of page and where the actual cut will be made.

Bottom of Box

fold